

architecture

music design

art

paastudio

UNIVERSITY OF MELBOURNE NEW BUILDING FOR THE FACULTY OF ARCHITECTURE BUILDING + PLANNING

sustainable architectonics for the digital age

PACIFIC PALISADES, CA
www.paastudio.com

the design process

first of all

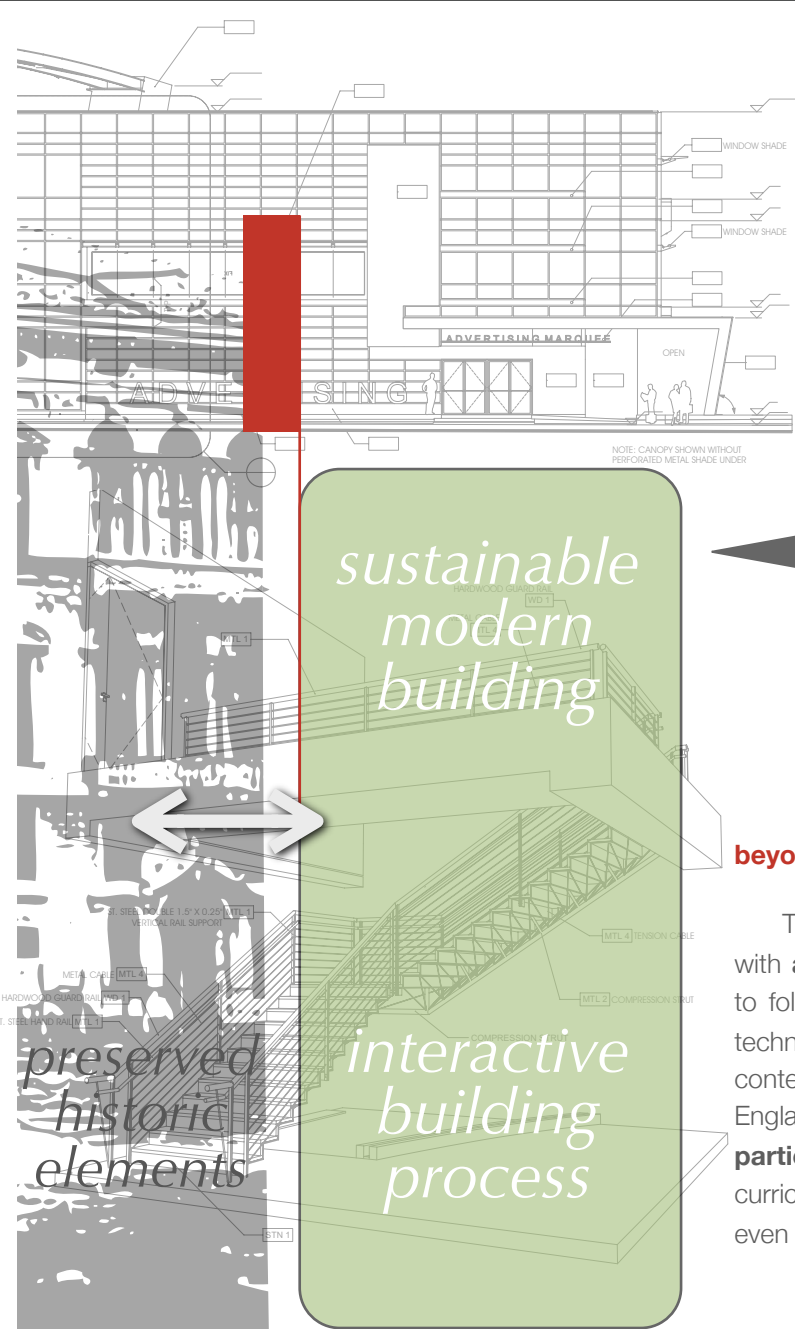
We would like to thank the **University of Melbourne** for the opportunity to present to the jury our thoughts on the *NEW BUILDING FOR THE FACULTY OF ARCHITECTURE, BUILDING AND PLANNING*.

design+communication=excellence

We are presenting to you **paastudio's** capabilities to create a **unique academic environment** with a methodology, which will explore the **design process** in all possible aspects from its **very start** - and for the first time - **interactively** on university grounds.

Please, explore this layout and feel free to follow any hyperlinked material.

built pedagogy



(Software accessibility is a pivotal point for the project - ArchiCAD™ is not only cross-platform compatible, but also **free** for educational use in full)

University of Melbourne
AB+P Faculty,
Students,
Public

sustainable modern building

beyond the Bauhaus spirit

interactive building process

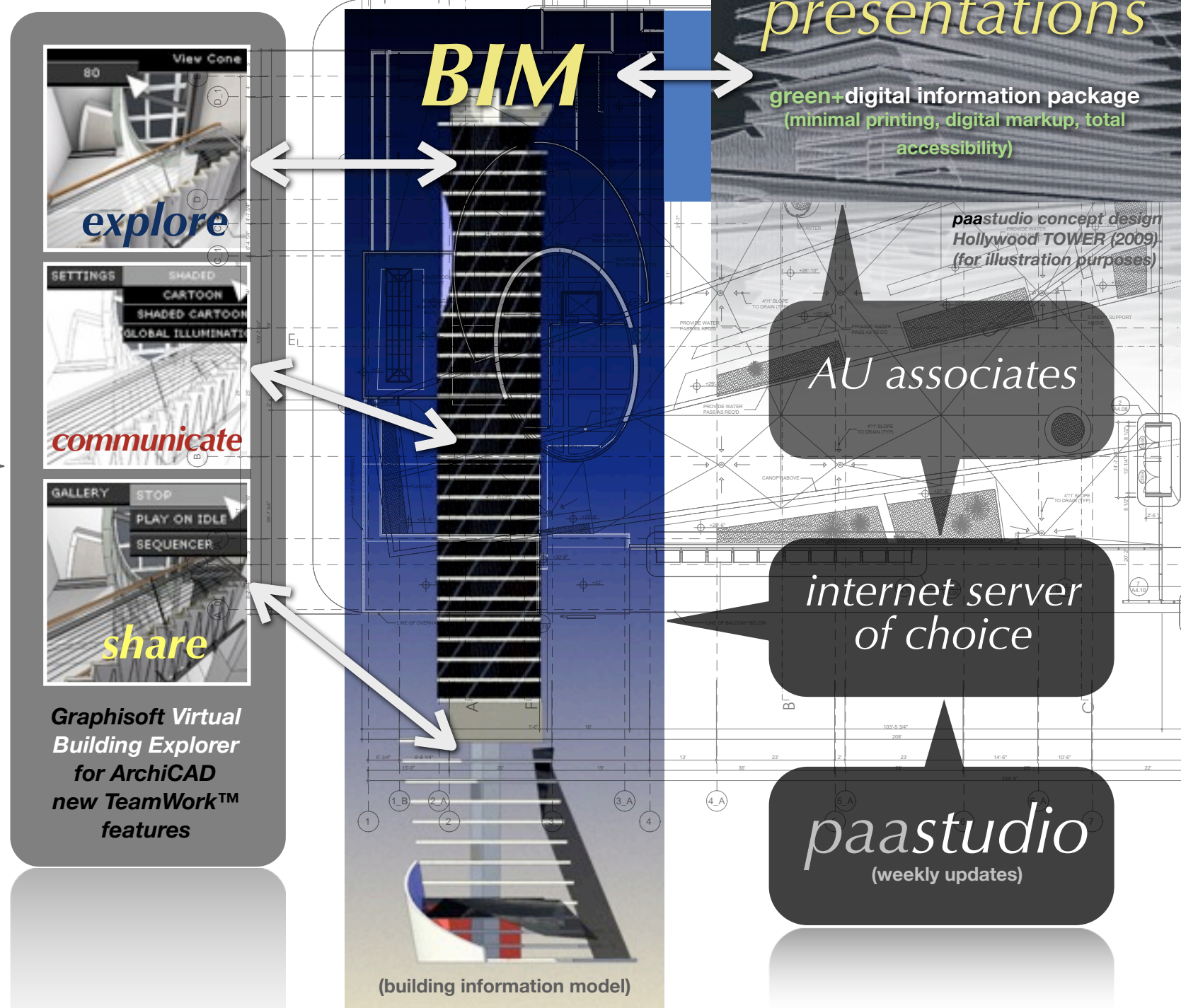
preserved historic elements

This project will also encompass **historic preservation** with **advanced sustainable** means. Students will be able to follow through with the application of precisely modern techniques for incorporating preserved historic elements in contemporary environmental systems (shown in our New England Biolabs project, page 6R), as well as being able to **participate** directly in such as a component of their curriculum. They will be able to **experience** first hand and even physically engage in the building erection, system

21st century connectivity

We envision the design of the *NEW BUILDING FOR THE FACULTY OF ARCHITECTURE, BUILDING AND PLANNING* as an example of intercontinental **communication** of the new millennium. We at **paastudio** utilize ArchiCAD™ as our main design tool and have been on the forefront of **BIM** as regular Graphisoft® collaborators and contributors for more than 13 years.

This competition is perhaps the best opportunity to employ ArchiCAD's **Virtual Building Explorer**, a new tool for **interactive** BIM communication, as well as upcoming **TeamWork™** features. A copy of the master AC file will be kept on an internet server of choice with weekly updates, accessible via UN/PW by all parties involved, including UM AB+P Faculty, students, local planning agencies and interested public groups. This file will be available from the beginning of the design process, with a **rare opportunity** for the architectural scholars to participate in **BIM** creation right at the start of planning, rough modeling and spatial allocation. The design process will also open a one-of-a-kind dialog between a **professional** firm and **academic** body, which will create **unique** resources for teaching **Architecture**.



placement and finish process - a famous Bauhaus' hands-on principle, which has yet to find its true place in a **modern** School of Architecture.

Looking from a **25** year perspective at ones university days and subsequent early practice, we can truly evaluate the impact of such **participation** in understanding not only design, functional and aesthetic correlations, but also the perception of **materials, methods** and their application in the **real** construction process.

Again - this is a golden opportunity to **bridge** the full BIM communication as basis of our profession and striving excellence of architectural upbringing to the practical and final side of a project - its **physical** coming to life. Which logically ties to the next topic - the Living Building.

the living building

sustainable |sə'stænəbəl|

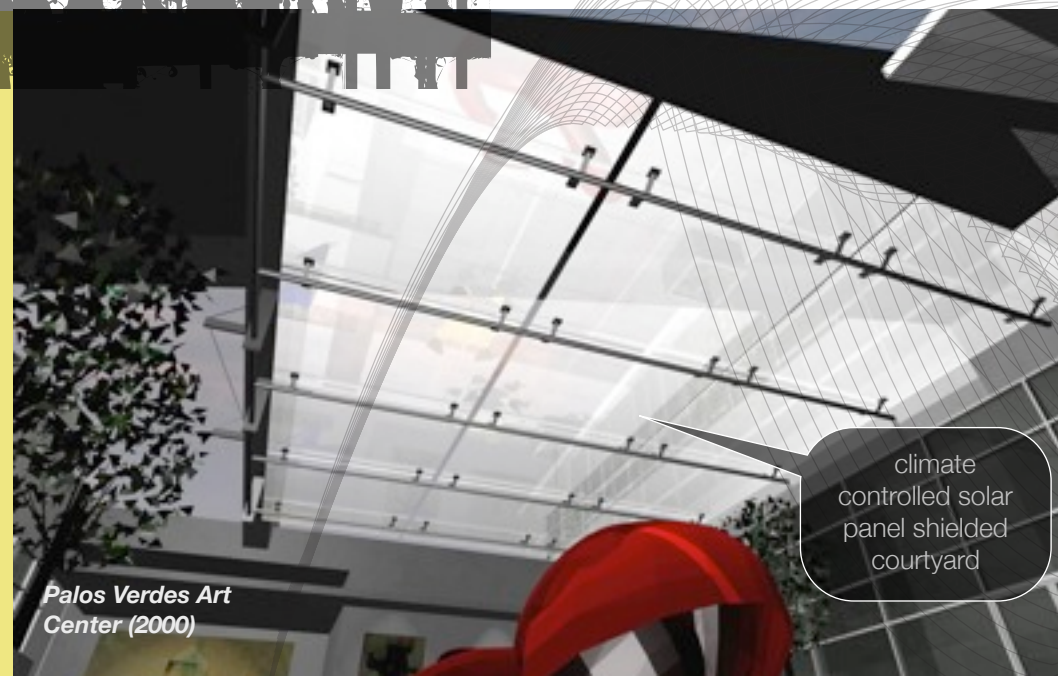
(adjective)

able to be maintained at a certain rate or level : sustainable fusion reactions.

Ecology (esp. of development, exploitation, or agriculture) conserving an ecological balance by avoiding depletion of natural resources. (US Oxford Dictionary)

We would like to take the dictionary definition even a step **further** and fuse it with the 'living' premise: the **building** should develop to the status of of a **live organism**, a combination of **passive** and **active** components, performing together in sync. A **computer control center** for running solar elements, such as energy collection, louvre rotation, canopy position, etc, which also controls building **systems** and **security**, forms the building's **cerebrum**, while **breathing** is achieved through controlled and naturally flowing **aeration** and optimal use of power, generated by the

truly active building components - photovoltaics and wind turbines. Further, the complex **atria system** of green interconnections resembles symbolically the **molecular** structure of living matter.



Palos Verdes Art Center (2000)

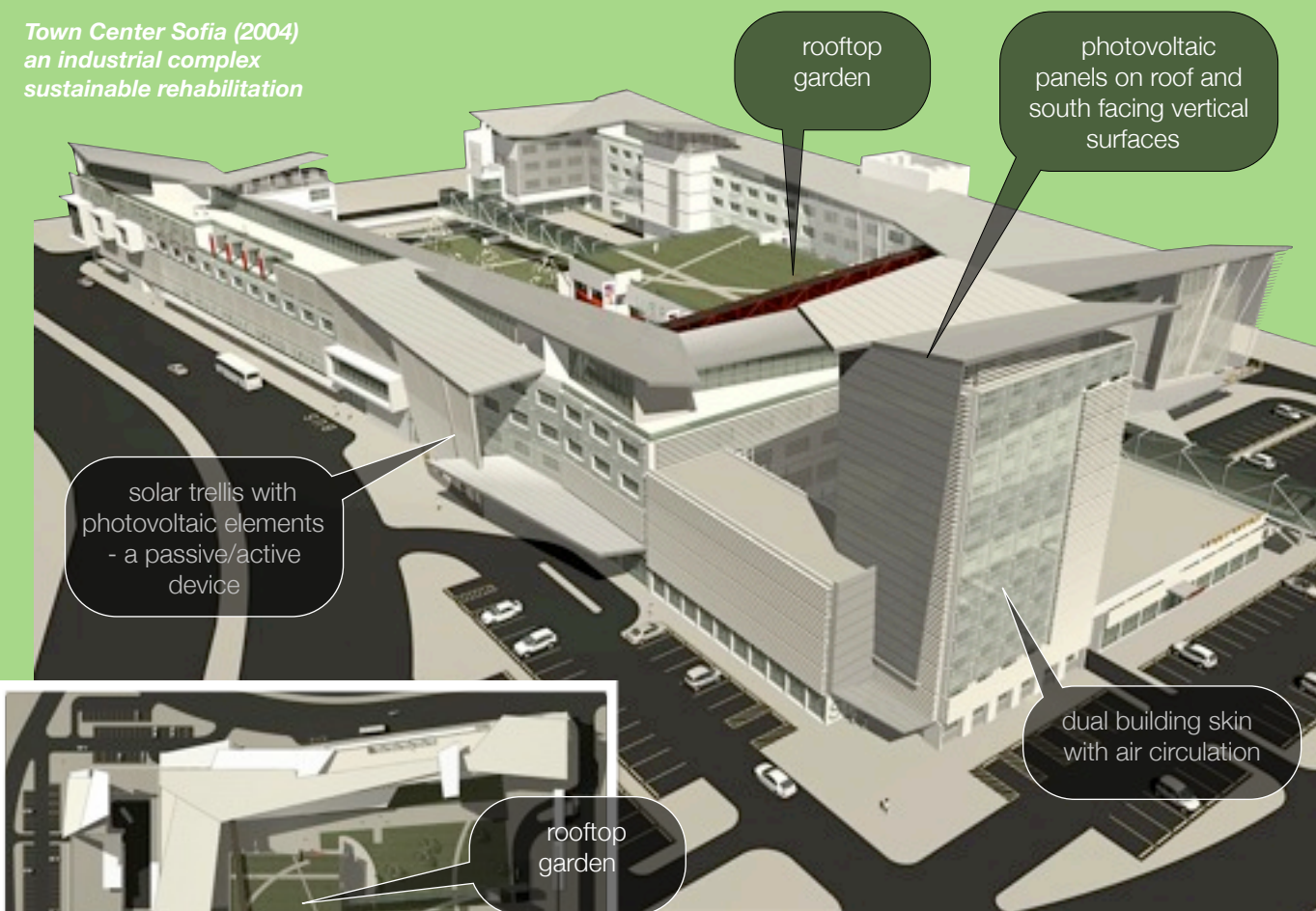
climate controlled solar panel shielded courtyard

space within space

A 21st century approach to the new academic environment will be to adopt **flexibility** and **fluidity** of space, along with redefining some of the oldest elements of architectural composition - the **atrium**. In Town Center Sofia, 2004 (to the right), the '**city within the city**' concept was developed on a much larger scale, yet a courtyard/atrium space system adds **elegant fluidity** to any, especially - university environment. A **pattern** of inter-operative **atria** (below), resembling a small city, on different levels, with distinct light and exterior exposure, as well as horizontal and vertical void allocation, will create a **variable** texture of spatial correlations and **activity** patterns to satisfy all types of scholastic assignments.

Following the fluent **informational exchange** pattern, the **volume** relation development of the new building should cultivate a milieu of high **kinetics**, well adaptive to demanding academic standards.

Town Center Sofia (2004)
an industrial complex
sustainable rehabilitation



rooftop garden

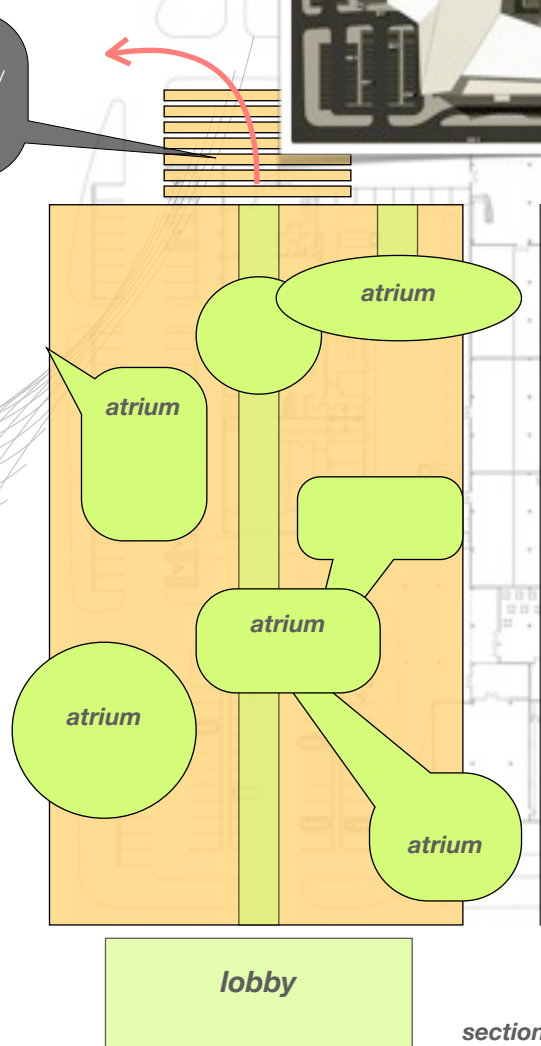
photovoltaic panels on roof and south facing vertical surfaces

solar trellis with photovoltaic elements - a passive/active device

dual building skin with air circulation

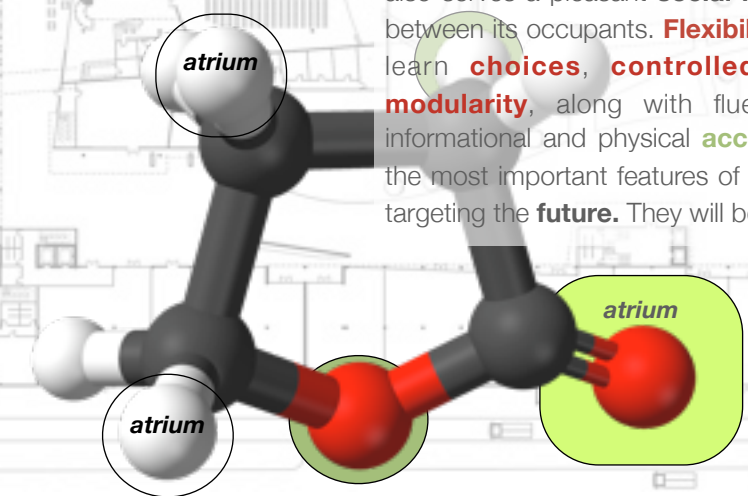
rooftop garden

rooftop wind energy generators/hot air suction release



photovoltaic (S) translucent building skin

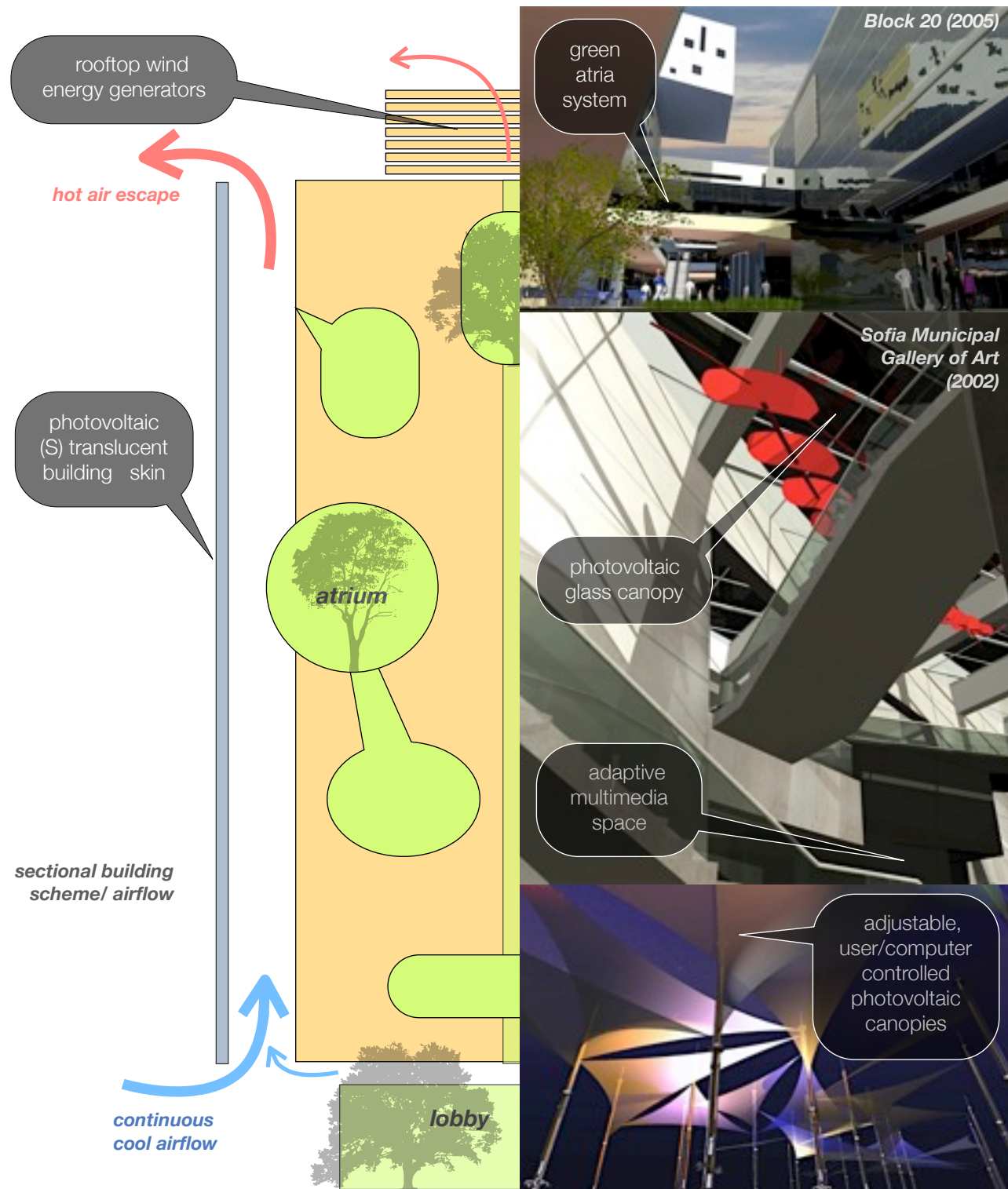
simple (N) transparent building skin



► **Flexible** interior **partitioning** will allow for a natural **evolution** of the **structure** in sync with the progressive needs of architectural education in the **fast** changing world of today. And although this may seem like a science fiction setting, in our view, it will be the true way of the **future**.

Blending the exterior and the interior of a building has been a long-term interest of ours, allowing a closer connection of **inhabitants** and **surroundings**. This method assists not only for basic human needs, but also serves a pleasant **social model of interactivity** between its occupants. **Flexibility** of space, work and learn **choices, controlled** transparency and **modularity**, along with fluent **communication**, informational and physical **accessibility** are some of the most important features of an **educational** facility targeting the **future**. They will be present in our work.

sectional building scheme/ molecular structure



the design studio

the architecture of... Architecture

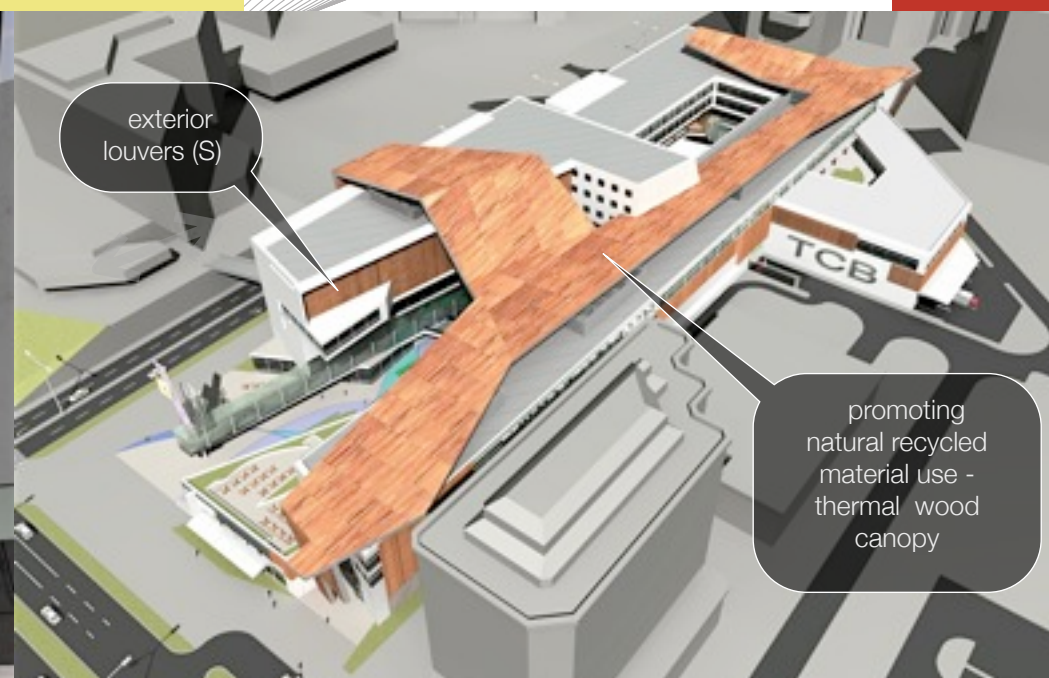
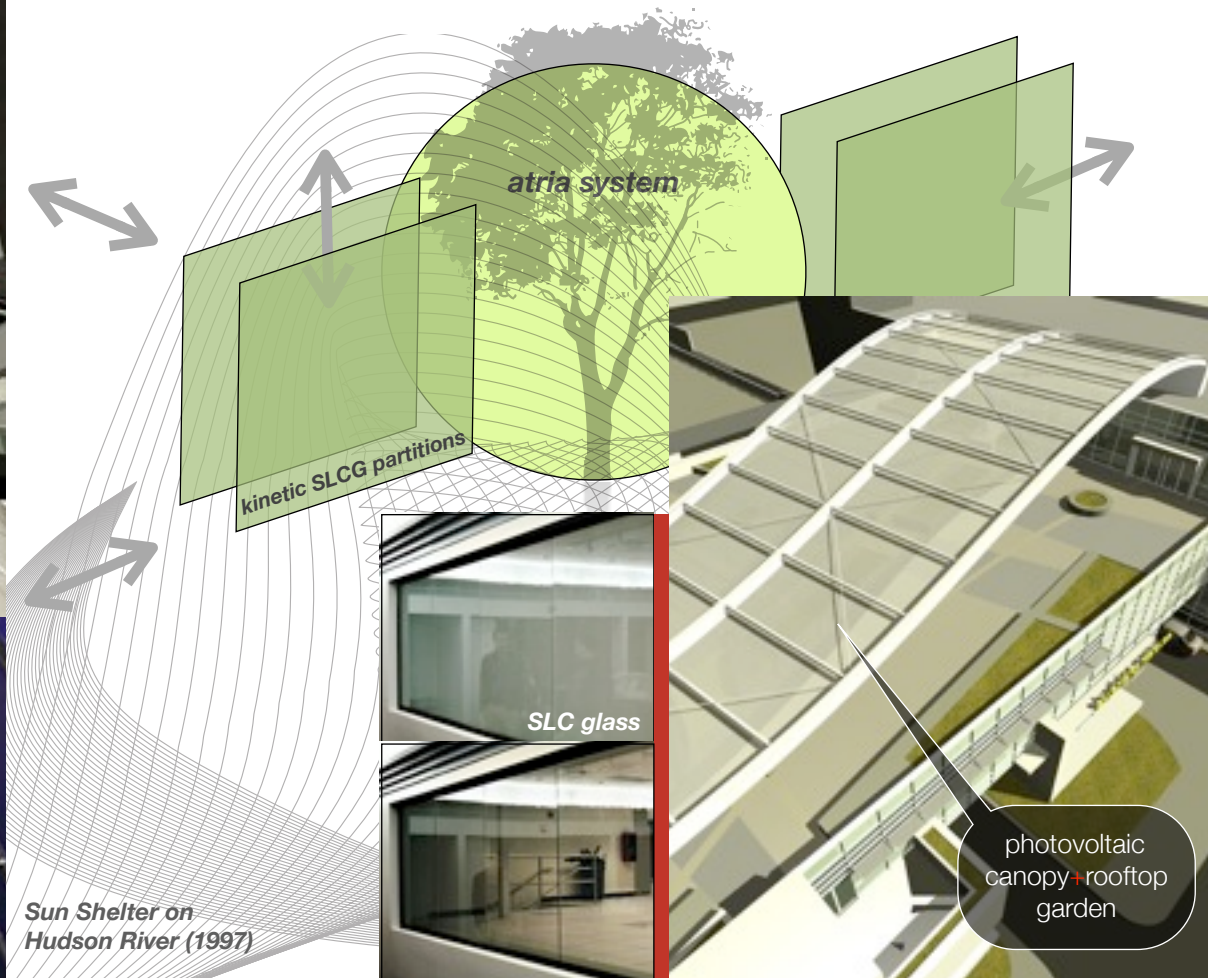
To **teach** Architecture in the new millennium is as **exciting** as to **make** it. Planning for the time ahead and providing **long term** adequate education, study and research facilities, as well as **efficiency**, will be some of the most up-to-date features of the **NEW BUILDING FOR THE FACULTY OF ARCHITECTURE, BUILDING AND PLANNING**.

Flexibility of space along with **advanced** building systems and full **sustainability** will assure **long building life** and high level of **integration** with **future** academic tendencies. The above discussed atria system is another key feature of interior **kinetics**, as flexible classes' organization is realized at different levels in all 3 spatial axes. A sensible degree of delicately **controlled transparency**, both physical and virtual, is achieved with variable **moving partitions** and **switchable** liquid crystal (SLC) **glass**, as well as total **full-time connectivity** to the building's

main computer frame not only from within, but also from **any** point on the planet, thus philosophically reinstating the fluent **bridge** between exterior and interior, as well as the use of **renewable** and recycled **material** sources - similar techniques are shown in **all** of our current **projects**.

Indoor **living plants** within the atria system will act as additional CO₂ reduction clusters, as well as provide a necessary **green** buffer. Once again, the **philosophy** of designing a multi-layer environment based on **adaptive** use and volume, will come to life not only in the building itself, but throughout the whole **open** design and development **process**, which turns to part of the curriculum as well.

Blending of **all** academic activities - study, teaching, research, interdisciplinary connectivity and hands-on experience will be right and equally addressed in the new complex as vital parts of the overall **tissue** of the **living building** - an **evolving** organism in **itself**, adaptive for the **time to come**.



who we are

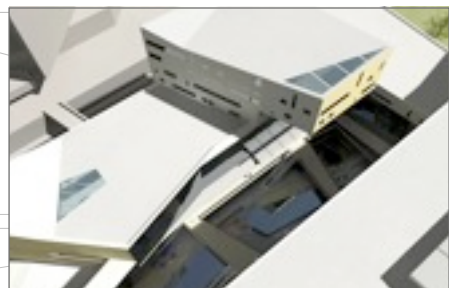
paastudio is a dynamic multifaceted firm in Pacific Palisades, CA, USA, with 25+ years of experience in the field of architecture, with solid international recognition and interdisciplinary achievements, successfully combining architecture, art and music into a total solidified experience.

reference client

Blanchard Groups, Inc. (please, follow link)

Australian associates

Whitefield McQueen Irwin Alsop (Melbourne)
 Brendan Jurich & co-praxis (Perth)
 (or Firm of Choice by UM)



Block 20 (2005)

partial list of projects

recognition

ASSEMBLY FACILITIES

- Heritage Welcome Center, Park City, KY
- Sofia Municipal Gallery, Sofia, Bulgaria
- Palos Verdes Art Center, Los Angeles, CA
- Hudson River Sun Shelter, New York, New York
- Yokohama Port Terminal, Yokohama, Japan
- Children's Center, Gabrovo, Bulgaria
- City Theater Hall, Smoljan, Bulgaria
- Colossus Performance Arena, Las Vegas, Nevada
- Convention Center, Pleven, Bulgaria
- Municipal Building, Abu Dhabi, UAE

BANKS

- City National Bank, Los Angeles, California
- Security Pacific National Bank, Pasadena, California

CASINOS

- Desert Inn Casino Remodel, Las Vegas, Nevada
- Luxor Resort and Casino, Las Vegas, Nevada

OFFICE & COMMERCIAL DEVELOPMENT

- 429 Santa Monica Boulevard, Santa Monica, California
- 800 South Hope Street, Los Angeles, California
- 9301 Wilshire Boulevard, Beverly Hills, California
- Asahi Kokusai Recording Studio, Santa Monica, California
- Astrolite Alloys, Camarillo, California
- ARCO Headquarters, Pasadena, California
- Block 20, New Belgrade, Serbia and Montenegro
- City of Long Beach Animal Shelter, California
- C.R.A. Headquarters, Los Angeles, California
- Epitaph Records, Los Angeles, California
- Gateway Tower Remodel, Pasadena, California
- GTE Main Street, Interactive TV, Santa Monica, California
- MCC Santa Monica, Mall and Condominium Complex
- NHS Headquarters, Los Angeles, California
- Town Center Sofia, Sofia, Bulgaria

MEDICAL FACILITIES

- Ambulatory Surgical Center, Beverly Hills, California

philosophy

we could just call it 'livable minimalism' and be done. however, there are function and form, structure and aesthetics, beauty, budget and the environment - with the same attention to detail; the fusion of art and building science into a practical, sustainable piece of imagination - first digital and then real, and then truly green again.

a step further beyond Bauhaus' 'form follows function' is what we see as 'form fuses function' - parallel evolution at every level of development with complete transparency of building interaction and automation at all stages of its life.

'delicate definition of space', the fluid transition between surroundings and the different parts of a total volume, which are established without vertical partitions and still retain their identity and crisp function; and besides being poetic this also becomes a fact. furthermore and back to basics, paastudio provides the proficiency of executing the job within the required time and budget.

in conclusion - at a more abstract level, the above mantras are further explored in the art and music on our web site, which we hope you will enjoy as well.

USC Physical Therapy, Los Angeles, California

HOTELS

VIP Suites, Desert Inn, Las Vegas, Nevada

RESIDENTIAL BUILDINGS

- 3 Unit Residence Remodel, San Pedro, California
- Gloaming Way Residence Duo, Beverly Hills, CA
- Ely Meadows Townhouse Complex, Ely, Nevada
- Glen Valley Complex Remodel, Glendale, California
- Hollywood Hills Residences 1-2, Los Angeles, California
- Hollywood Hills Residences 3-4, Los Angeles, California
- Malibu Residence Remodel, Malibu, California
- Palisades Residence 2, Pacific Palisades, California
- Palisades Residences 3-4, Pacific Palisades, California
- Palisades Residences 5-6, Pacific Palisades, California
- Ostayan Residence, Beverly Hills, California
- Woodbury University Student Dormitories, Burbank, CA

RESTAURANTS

- Fine Dining, Luxor Hotel And Casino, Las Vegas, Nevada
- Fish House, Luxor Hotel and Casino, Las Vegas, Nevada
- High Energy, Luxor Hotel and Casino, Las Vegas, Nevada
- Hill Street Cafe, La Canada, California

RETAIL (in association with DES-Arc)

- Bay City Shopping Center, Nagoya, Japan
- Centro Commerciale Ipercoop, Pordenone, Italy
- Kukulcan Village, Cancun, Mexico
- Nassica Oporto Factory Outlet Center, Oporto, Portugal
- Parco Commerciale Urbano, Viculungo, Italy
- Plaza Singapura, Singapore
- Raffle City Shopping Center, Singapore
- Tampines Mall, Koala Lumpur, Malaysia
- Walt Whitman Mall, Long Island, New York

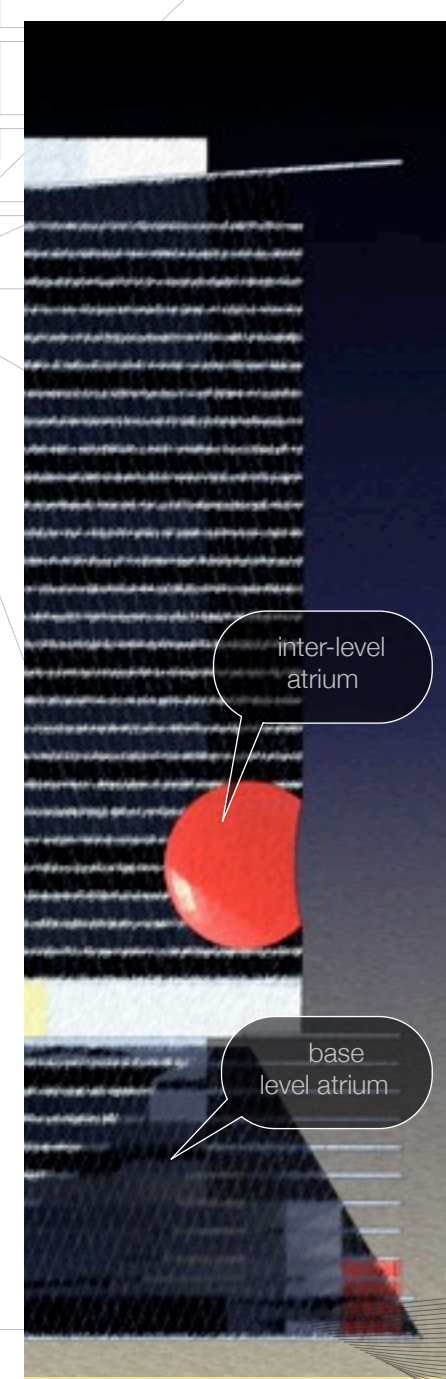
SCULPTURAL AND MURAL APPLICATIONS

- 429 Santa Monica Boulevard, Santa Monica, California
- 9301 Wilshire Boulevard, Beverly Hills, California
- Bacchanal Restaurant Mural, Caesar's Palace, Las Vegas, NV
- John Branca Residence, Mural Art, Beverly Hills, California

paastudio concept design - Hollywood TOWER (2009)
 sustainable high-rise development

partial list of clients

- Archon Group
- Asahi Kokusai Dev. Corp
- ASR Development
- Astrolite Alloys
- Automobile Club of So. Cal
- Blanchard Groups
- Caesar's World Int'l, Inc.
- CenFed Bank
- Charles Dunn CO.
- City of Bell
- City of Los Angeles
- Coast Federal Bank
- Coldwell Banker
- Colliers-Seeley
- Colliers International
- C.R.A., Los Angeles
- Cushman Wakefield, Inc.
- Del Webb Inc.
- Desert Inn, Inc.
- Epitaph Records
- Farmers Insurance
- Good Samaritan Hospital
- GTE Main Street
- Heiss and CO. Inc.
- Hussman & CO.
- Kaiser Permanente
- Koll Management CO.
- MGM Grand Hotel, Inc.
- NHS LA
- Pacific Life Insurance
- Pinnacle Realty
- River Hotel Company
- Mrs. Sasha Stallone
- Sovereign/ Ring
- University of Southern California
- Wilson & Associates
- Woodbury University



inter-level atrium

base level atrium

▼ recognition (continued)

recognition

2008
Atlantis Studio 2 worldwide distribution marquee and box cover, Abvent, Paris, France

2007
The New 100 Houses, Images Publishing Group

2007
Great Architects: a Graphisoft Series

2006
Design Year Book, Liaoning S&T Publishing Group, Shanghai, China

2006
Success Story: a Graphisoft presentation of the NHS Office Complex

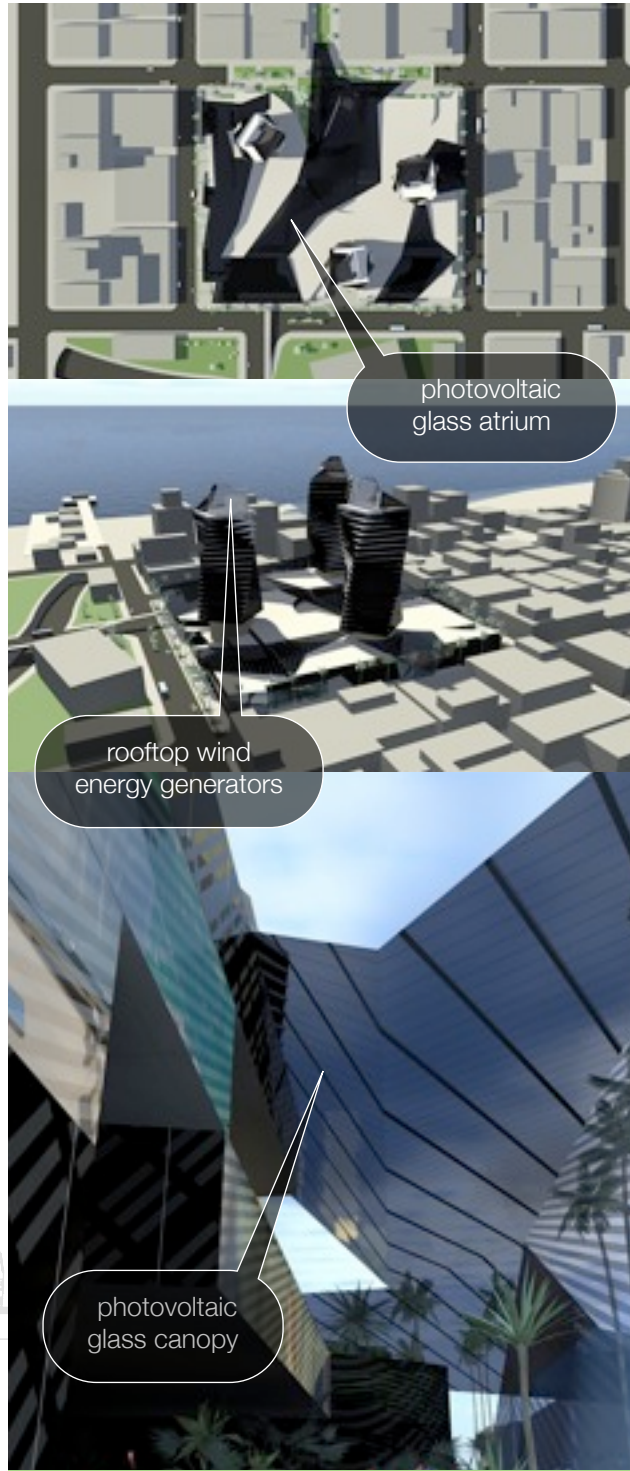
2005
Merit Award, Pacific Palisades Residence, Residential Architect Design Awards

2004
Second prize, Invited Competition, Town Center Sofia, Sofia, Bulgaria

2003
NHS Office Complex ArchiCad 8.1 ad campaign, Architectural Record, Architecture Magazine

2003
Sofia Municipal Gallery of Art, 1 Magazine

MCC Santa Monica - 1,600,000 SF mixed use sustainable complex (2008)



photovoltaic glass atrium

rooftop wind energy generators

photovoltaic glass canopy

IVO VENKOV, ARCHITECT

LICENSE

1994 Licensed Architect, California, USA
1984 Licensed Architect, Europe

PROFESSIONAL AFFILIATIONS

1994 American Institute of Architects

CAREER PROFILE

Since opening practice in Europe in 1984, Ivo Venkov has designed a number of important projects in the United States and overseas. His architectural expertise ranges from private residences to assembly facilities and has earned him international recognition and awards. He is the founder of **paastudio** in 1992. Since then, **Mr. Venkov** has been developing a broad spectrum of works, which have established **PAA's** line of thinking as well as the company's perception for functional design. He has also a successful art career with a number of works in international museums and private collections.

Coincidentally, he is also author of a rock-opera in 1984, which once again shows, that architecture could be considered 'still music'. Sometimes still, that is.... His recent compositions explore new-jazz with fusion to rock, native and some classical and are distributed online through iTunes, Napster and Amazon.

key professionals

RECOGNITION prior to PAASTUDIO

1987

Residency, School of Architecture, School of Fine Arts, Washington University in Saint Louis, Saint Louis, Missouri

1986

Second Prize, National Design Competition, Convention Center, Pleven, Bulgaria

1985

Honorable Mention, Design Competition, Children's Center, Gabrovo, Bulgaria

1983

Third Prize, Design Competition House of the Future, Paris, France

ROSSI VENKOV, ARCHITECT

LICENSE

1996 Licensed Architect, Europe

CAREER PROFILE

Upon earning MA degree with specialization in Environmental and Historic Monument Preservation, **Rossi Venkov** has worked as a licensed architect in Sofia, Bulgaria. She joined **paastudio** in 1999. Since then, **Mrs. Venkov** has been as the company's other design partner in both aesthetics and functional, as well as regular office matters.

AWARDS prior to PAASTUDIO

1994

1st Prize, International Student Competition, Nior, France



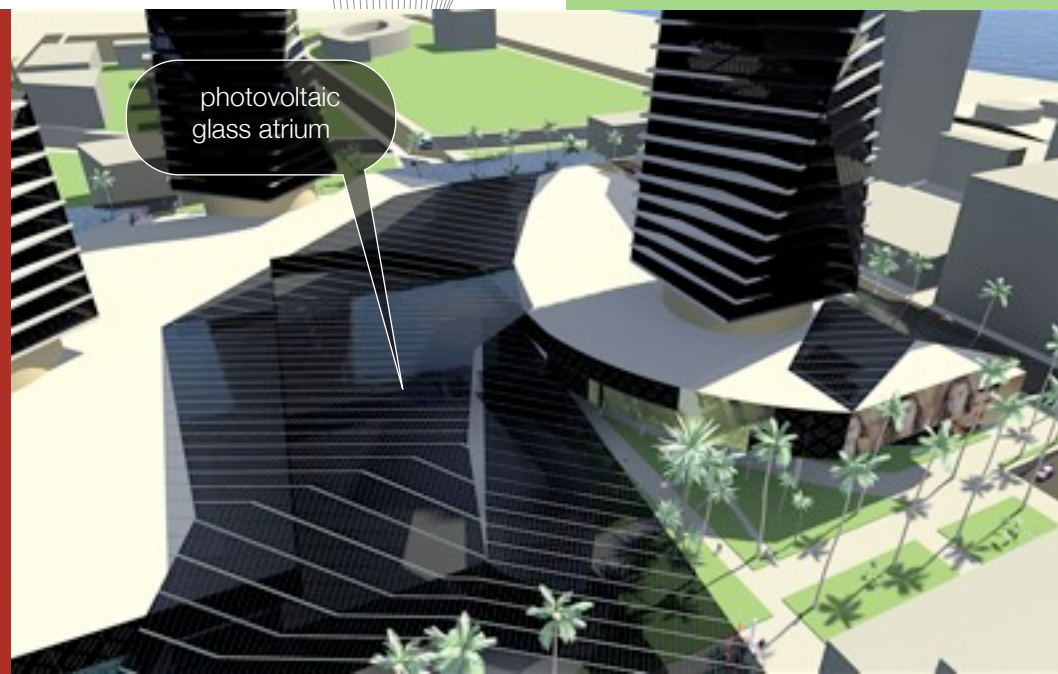
photo George Neykov

coda

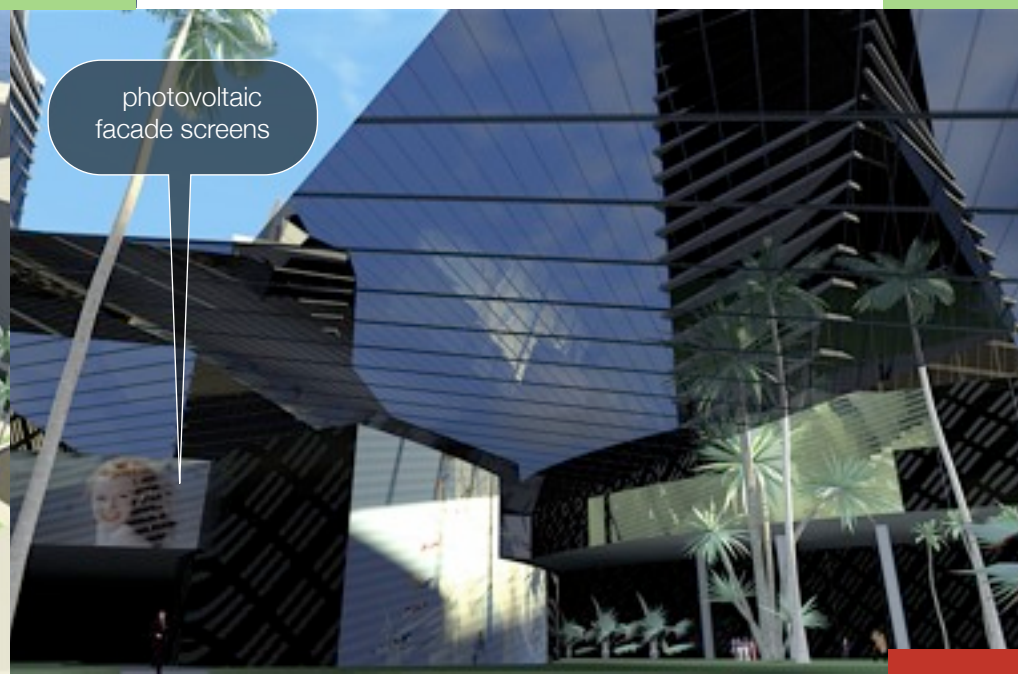
Fluidity of space, academic environment, architectural studies and building science will be developed by new means of interactive, sustainable technology and design as social and teaching media. Delivering the future. Now.

Thank you for your consideration!

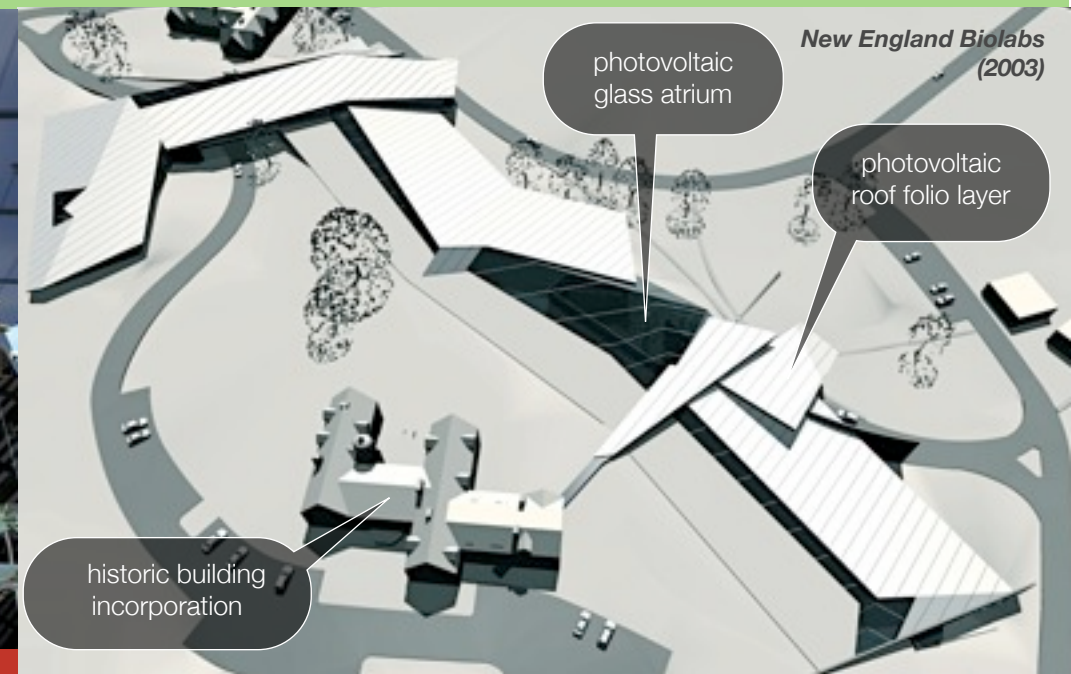
paastudio
(April 2009)



photovoltaic glass atrium



photovoltaic facade screens



photovoltaic glass atrium

photovoltaic roof foil layer

historic building incorporation

New England Biolabs (2003)